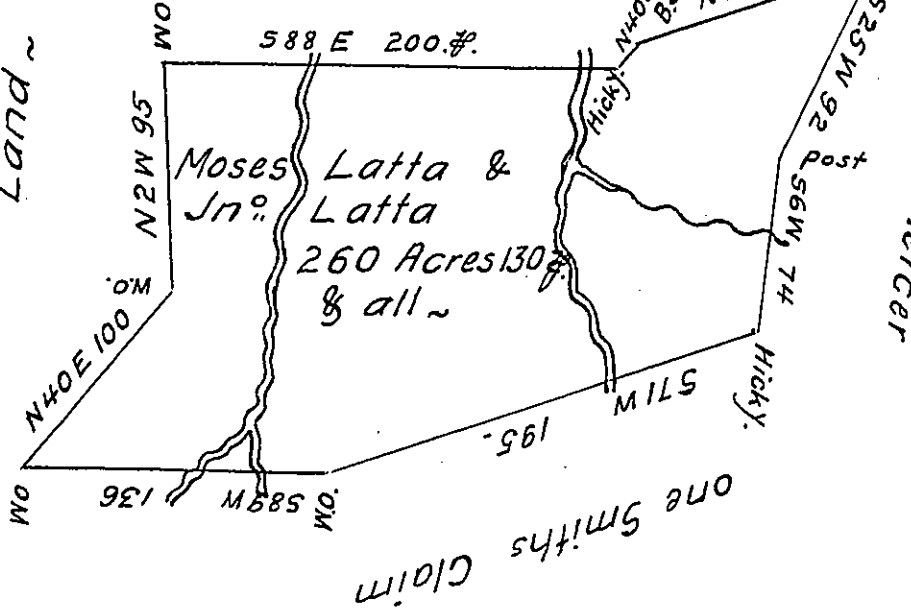


"Pawns Lodge"  
Manor Land

Manor Land ~



A13-220  
221  
C157-5

In Pursuance of a Warrant bearing date <sup>in the year 1786-</sup> the third Day of March  
 Surveyed on the 13<sup>th</sup> day of November 1787 unto Moses <sup>& John</sup> Latta the above  
 Discribed Tract of Land Situate on Sewickley in Mount pleasant Town-  
 ship in the County of Westmoreland Containing Two Hundred and  
 Sixty Acres & 130 perches & allowance of Six f<sup>ts</sup> Cent for Roads &c.

To John Lukens Esq. }  
 Surveyor General }

Benj Lodge D.S.

IN TESTIMONY that the above is a copy of the original remaining on file in  
 the Department of Internal Affairs of Pennsylvania, made  
 conformably to an Act of Assembly approved the 16th day of  
 February, 1833, I have hereunto set my Hand and caused  
 the Seal of said Department to be affixed at Harrisburg,  
 this twenty first day of July 1905

*Edward P. ...*  
 Secretary of Internal Affairs.